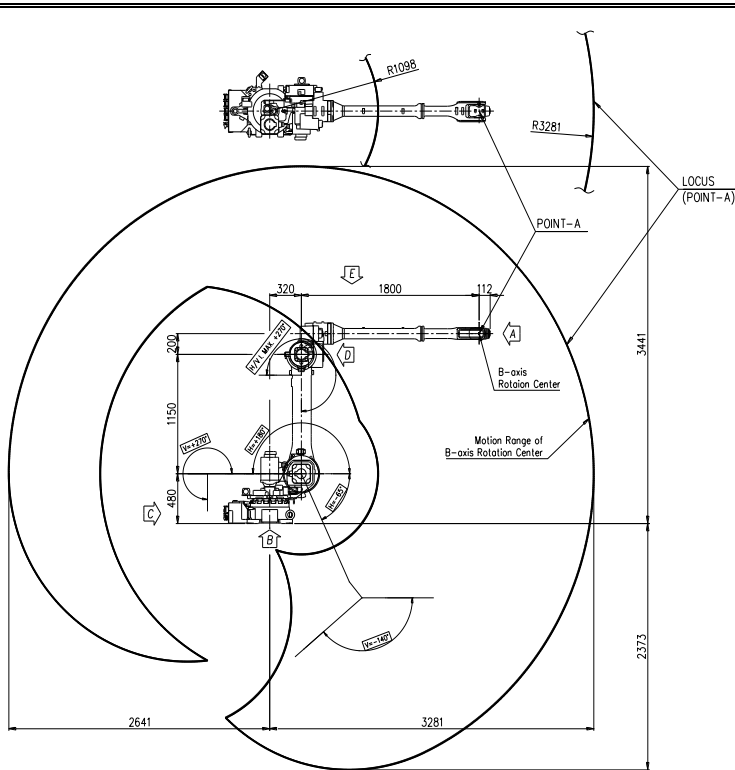


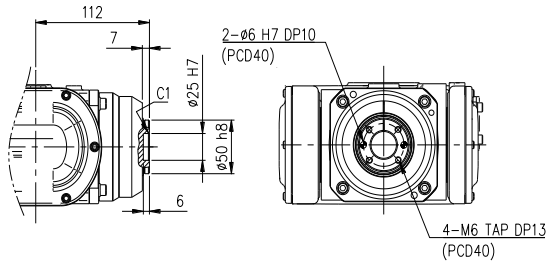
# HH020L

## Payload 20Kg

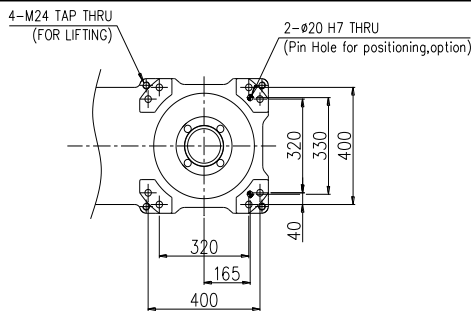
Installation method		Application	
Floor	●	Spot welding	
Ceiling	●	Arc welding	
Wall surface	●	Handling	●
		Assembly	●
		Sealing	●
		Painting	



**View A: Detailed drawing of the wrist attachment part**

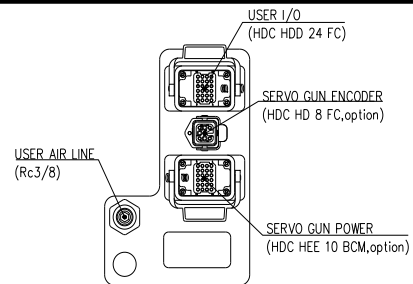


**View B: Dimensional drawing for the floor installation of the body**



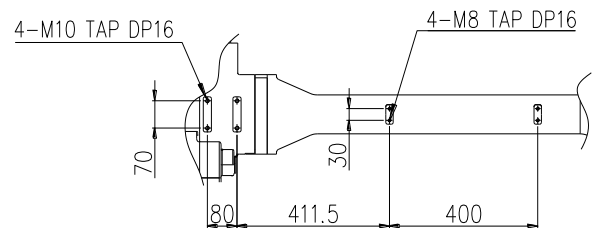
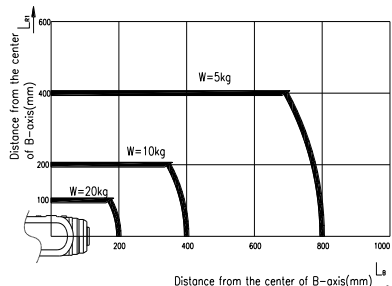
**View C: Application cable connection part (Option)**

**View D: Application cable connection part (Option)**

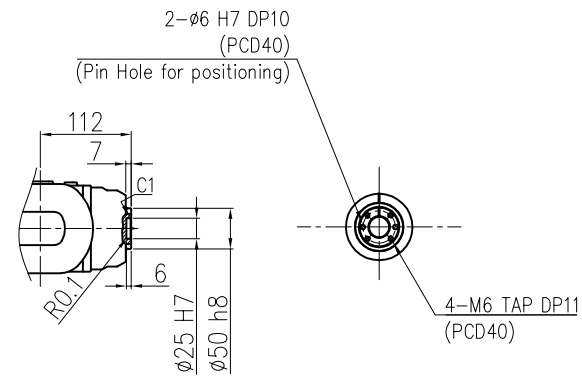


**View E: Details of the application ancillary part attachment**

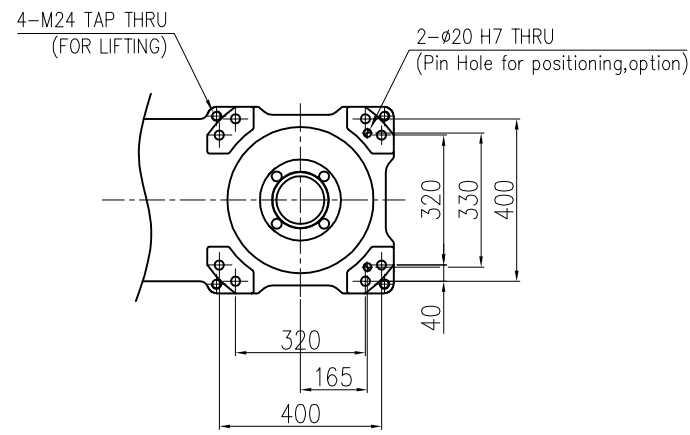
**Wrist-axis torque line diagram**



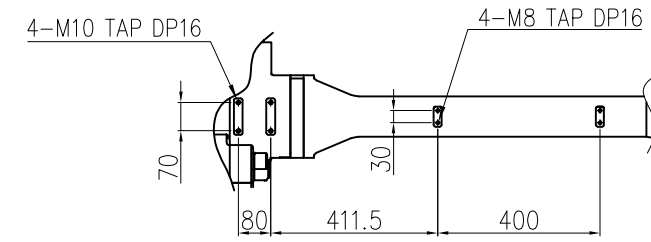
\*\* For product improvement, some of the ratings, specifications, dimensions, etc. are subject to changes without notice.



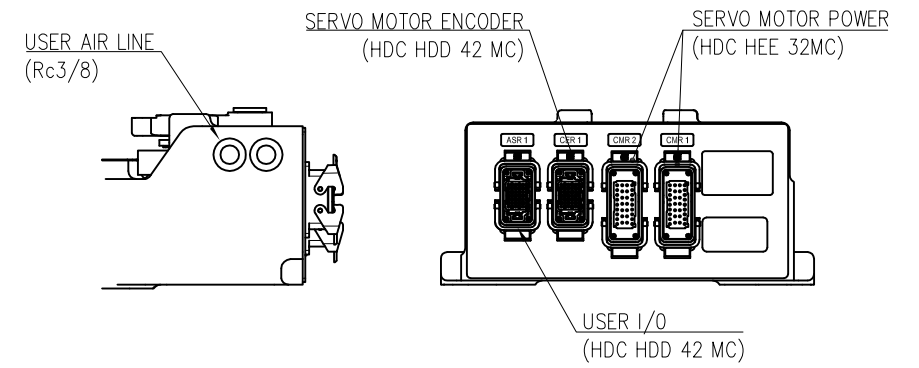
VIEW "A"  
(SCALE : 4/1)



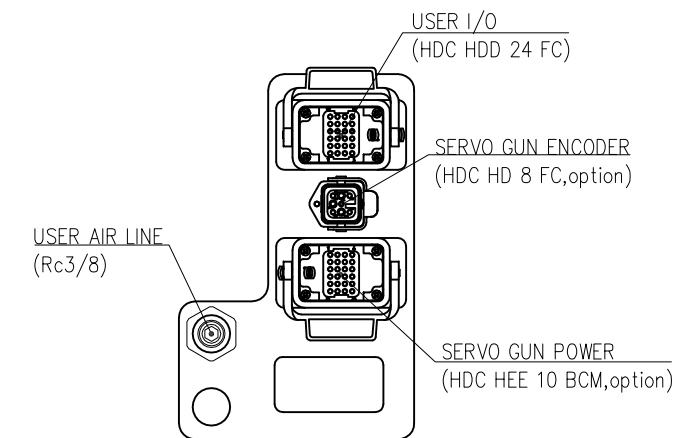
VIEW "B"  
(SCALE : 2/1)



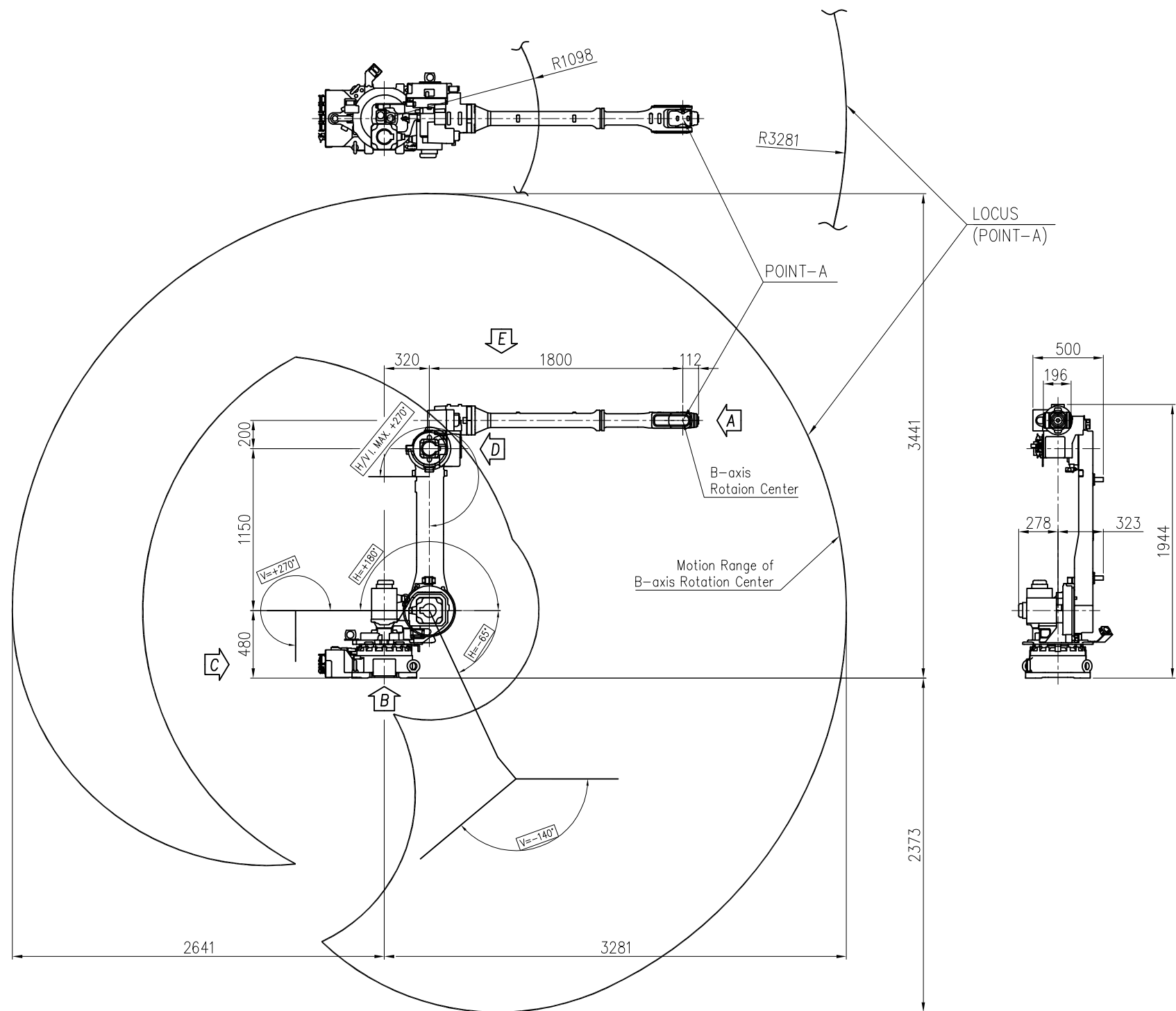
VIEW "E"  
(SCALE : 2/1)



VIEW "C" <For Hi5a Controller>  
(SCALE : 4/1)



VIEW "D"  
(SCALE : 8/1)



TECHNICAL SPECIFICATION SUBJECT TO CHANGE WITHOUT NOTICE

MODEL	HH020L	issue.0
DATE	2018.06.19	

